









TI:ME 1B

Instructional Software (Computer Assisted Instruction)

Monday, June 21, 2021

Music Theory.net

<https://www.musictheory.net/exercises/note>

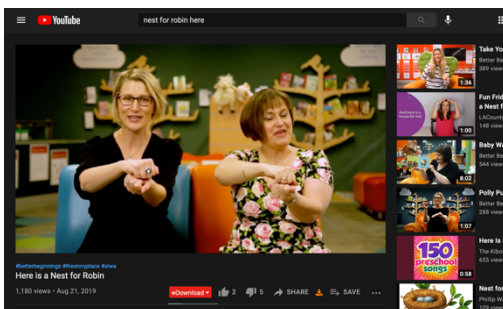
THE BASICS	
	The Staff, Clefs, and Ledger Lines Learn about the staff, treble and bass clefs, and ledger lines.
	Note Duration Learn about five types of notes and how flags affect note duration.
	Measures and Time Signature Learn about measures and how many notes each can contain.
	Rest Duration Learn about the different types of rest.
	Dots and Ties Learn how dots and ties modify the duration of notes.
	Steps and Accidentals Learn about half steps, whole steps, and the different types of accidentals.
RHYTHM AND METER	
	Simple and Compound Meter Learn how basic time signatures are classified.
	Odd Meter Learn about more complex time signatures.

MusicTheory.net's note recognition page is a **drill and practice** resource. MusicTheory.net requires students to recognize notes on the staff. Students can then point and click the correct letter name of each note at the bottom of the screen.

This resource would be helpful to my students because they are beginning to learn note names to play their recorders.

YouTube.com & AQWERTYON

<https://www.youtube.com/>



YouTube.com is a video hosting platform. More than 400 hours of content is uploaded to YouTube each minute, and one billion hours of content are watched on YouTube every day. So, various videos on YouTube can be categorized as **Tutorials, Drill & Practice, Games, and Discovery/Simulation**, depending on which video is chosen. However, no YouTube videos are interactive on the screen.

The webpage, AQWERTYON can be used to make YouTube more interactive
<https://musedlab.org/aqwertyon> can be used to

TI:ME 1B

Fonts

Monday, June 21, 2021

\

Proportional Serif - A Font With Serifs

Proportional Serif - American Typewriter

Proportional Serif - Baskerville

Proportional Serif - Bernard MT

Proportional Sans-Serif - Arial

Proportional Sans-Serif - Abadi

Proportional Sans-Serif - Calabri

Proportional Sans-Serif - Tahoma

Non-Proportional Serif - Courier

Non-Proportional Serif -

Non-Proportional Sans-Serif - Lucida Console

Non-Proportional Sans-Serif - Monaco